

TECHNO RAINBOW FULL COLOR LED DISPLAY SYSTEM

6mm CURVABLE INDOOR LED DISPLAY

- ▶ Purpose designed to create maximum impact indoors
- ▶ 6mm pixels for brilliant and vivid color with 170-degree view from any angle

CURVABLE • PORTABLE • MODULAR • LIGHTWEIGHT

Up to 20 Degrees Concave per Module • Up to 10 Degrees Convex per Module



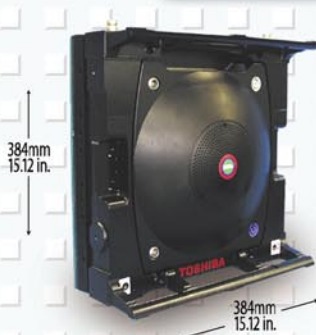
TR2006R flat
40 modules arranged
8 wide by 5 high.
3077mm (10.08 ft)
by 1920mm (6.3 ft)

TR2006R curved
24 modules arranged
8 wide by 3 high.
3077mm (10.08 ft)
by 1152mm (3.79 ft)



MODULE SPECIFICATIONS

LED Pixels	6mm pitch — 3 in 1 (RGB) SMD Type (Surface-Mount Display) LED
Brightness	2,400 cd/m ² (Calibrated)
Display Colors	over 1 billion colors
Image Depth	approximately 1,024 steps, 10 bit minimum
Viewing Angle	170° from any angle
Pixel Number	64 (H) x 64 (V)
Display Size	384 x 384 mm (15.12" x 15.12") = 0.15 m ² (1.6 ft ²) (approx. 21 inch)
Weight	9Kg (19.84 lbs)
Power Consumption	230 Watt (MAX)
Power Supply	AC100V ~ 240V single phase
Curved	Up to 20 degrees concave/Up to 10 degrees convex
Minimum Radius	Concave = 1.1meters (3.61 ft)/Convex = 2.2 meters (7.22 ft)



Big screen solutions
for the 21st Century

TECHNO RAINBOW FULL COLOR LED DISPLAY SYSTEM

POSSIBLE SCREEN SIZE EXAMPLES

INCH DIAGONAL	H x V (mm)		H x V (ft.)		PIXELS H x V		SCREEN AREA (m ²) (ft. ²)		NUMBER OF MODULES H x V		TOTAL MODULES	ASPECT RATIO	MAX POWER (Watts)	WEIGHT	
	H	V	H	V	H	V	m ²	ft. ²	H	V				Kg	Lbs
21.2	384	384	1.26	1.26	64	64	0.15	1.59	1	1	1	1.00:1	230	9	19.84
76.0	1536	1152	5.04	3.78	256	192	1.77	19.05	4	3	12	1.33:1 (4:3)	2760	108	238.08
88.0	1920	1152	6.30	3.78	320	192	2.21	23.81	5	3	15	1.67:1 (16:9)	3450	135	297.60
97.0	1920	1536	6.30	5.04	320	256	2.95	31.75	5	4	20	1.25:1	4600	180	396.80
109.0	2304	1536	7.56	5.04	384	256	3.54	38.10	6	4	24	1.50:1	5520	216	476.16
122.0	2688	1536	8.82	5.04	448	256	4.13	44.45	7	4	28	1.75:1 (16:9)	6440	252	555.52
142.0	3072	1920	10.08	6.30	512	320	5.90	63.50	8	5	40	1.60:1	9200	360	793.60
156.0	3456	1920	11.34	6.30	576	320	6.64	71.44	9	5	45	1.80:1 (16:9)	10350	405	892.80
151.0	3072	2304	10.08	7.56	512	384	7.08	76.20	8	6	48	1.33:1 (4:3)	11040	432	952.32
172.0	3456	2688	11.34	8.82	576	448	9.29	100.02	9	7	63	1.29:1	14490	567	1249.92
189.0	4224	2304	13.86	7.56	704	384	9.73	104.78	11	6	66	1.83:1 (16:9)	15180	594	1309.44
185.0	3840	2688	12.60	8.82	640	448	10.32	111.13	10	7	70	1.43:1	16100	630	1388.80
227.0	4608	3456	15.12	11.34	768	576	15.93	171.46	12	9	108	1.33:1 (4:3)	24840	972	2142.72
345.0	7680	4224	25.20	13.86	1280*	704*	32.44	349.27	20	11	220	1.82:1 (16:9)	50600	1980	4364.80
378.0	7680	5760	25.20	18.90	1280*	960*	44.24	476.28	20	15	300	1.33:1 (4:3)	69000	2700	5952.00

* over 832 x 640 pixels needs additional TRLC1050

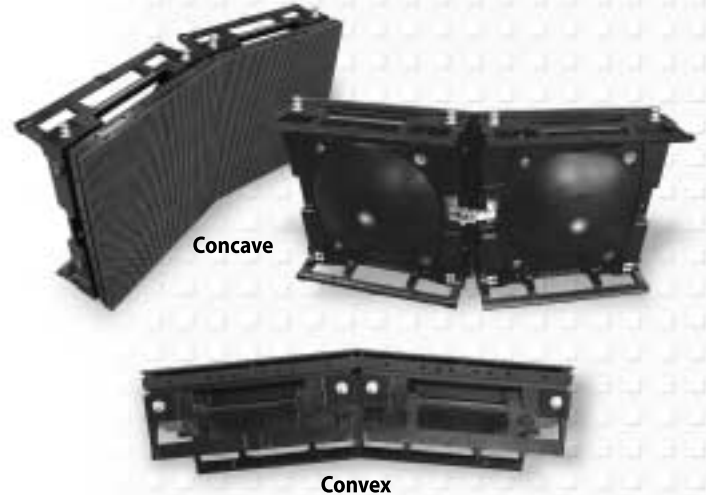
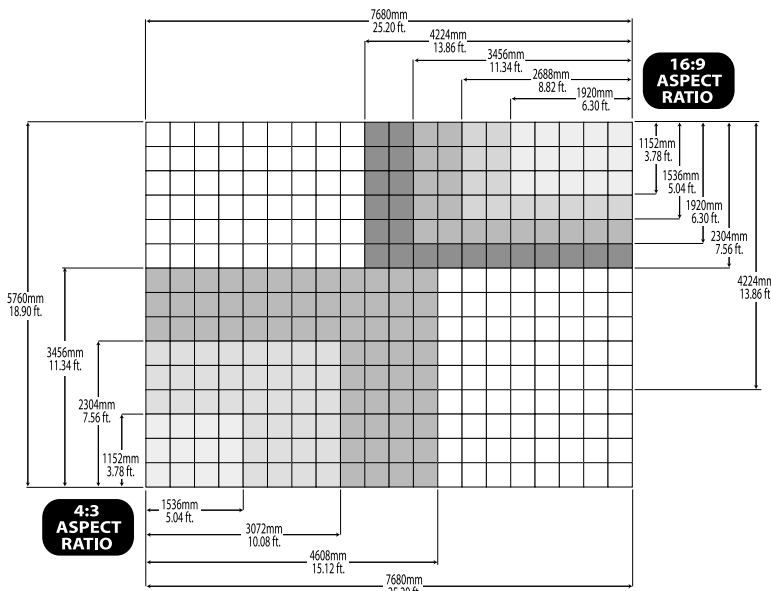
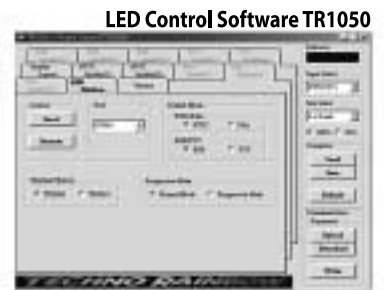


IMAGE PROCESSING SYSTEM SPECIFICATIONS

Input Signal	HD-SDI/STD-SDI/DVI-D (progressive only; looping)
Output Signal	100base-T (TR-link original) (100m max.) Up to 832 x 640 pixels, 1.0 frame delay
Control	Screen configuration Screen ON/OFF, Brightness, Test Pattern Input Signal, Color Preset, Scaling 25% ~ 200%
Dimension	430mm(17")W x 100mm(4")H (2U)
Power Supply	AC100V ~ 240V single phase



TOSHIBA TRANSPORT ENGINEERING INC.

JAPAN HEADQUARTERS
Display Media Overseas Department
Tokyo, Japan
PHONE: +81-42-335-6715
FAX: +81-42-354-3488
E-MAIL: technorainbow@technorainbow.com

NORTH AMERICAN HEADQUARTERS
Toshiba International Corp.
Houston, Texas, USA
PHONE: (800) 231-1412
FAX: (713) 466-8773
www.tic.toshiba.com

NORTH AMERICAN SALES
Kaizen Display Solutions
Portland, Oregon, USA
PHONE: (503) 238-5880
FAX: (503) 238-7501
E-MAIL: toshiba@kaizendisplay.com

EUROPEAN SALES
Display Knowledge
Somerset, United Kingdom
PHONE: +44 1458 253250
E-MAIL: info@displayknowledge.com

CANADIAN SALES
Chris Grant Group Inc.
Ontario, Canada
PHONE: (800) 837-0286
FAX: (905) 815-1344
E-MAIL: sales@chrisgrant.com